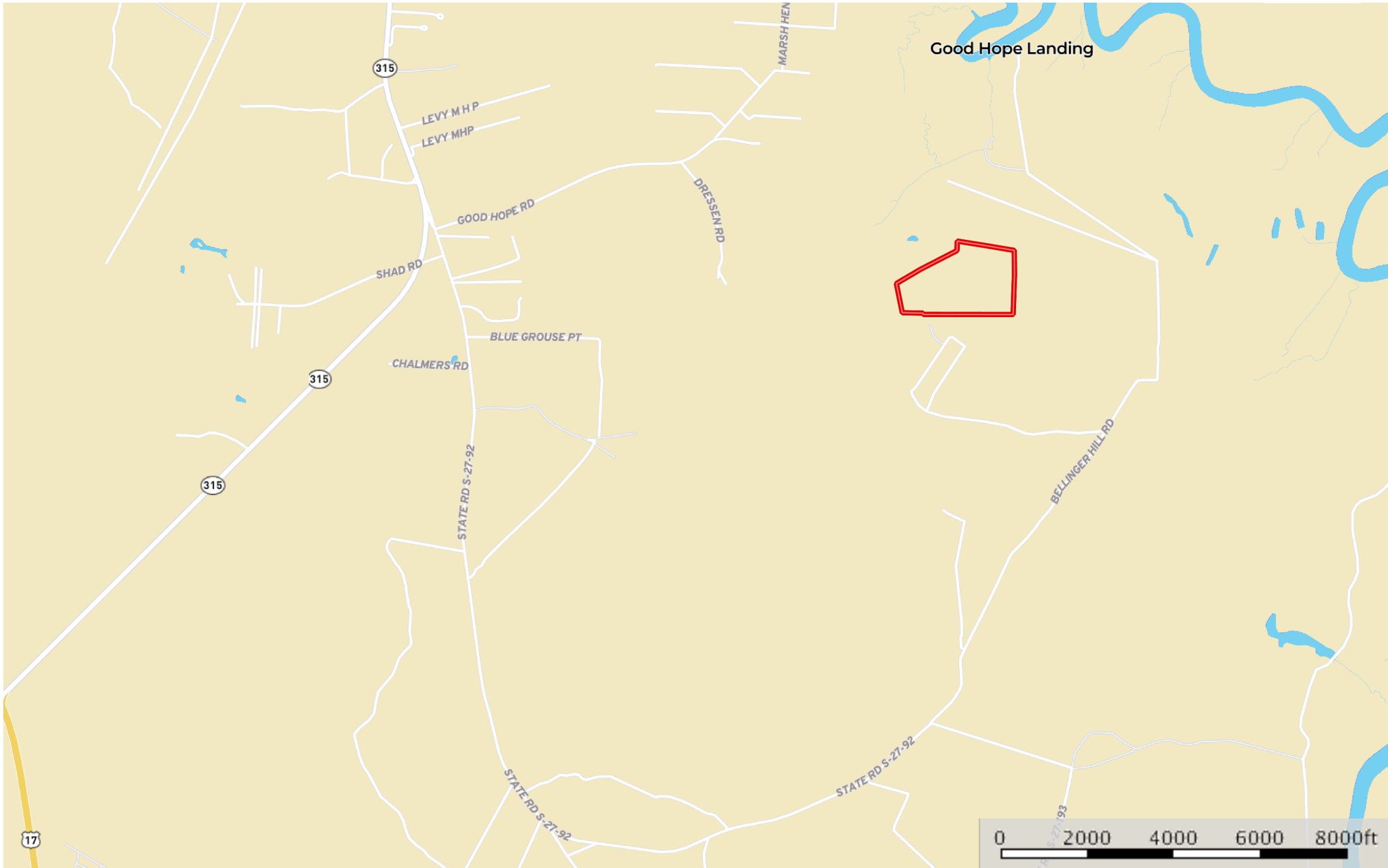


Molly's Pond Location

Jasper County, South Carolina, 60 AC +/-



Boundary

Disclaimer:
All information provided is assumed to be accurate and correct but no assumptions of liability are intended. Neither the seller nor the agent of the seller represent the accuracy of the information provided. Seller does not guarantee timber value, volumes, and acreages of the woodland, cropland, timber stands, ponds, or square footage of any structure. Seller does not guarantee the function of any improvements, including but not limited to all buildings, machinery, appliances, wells, equipment or water control devices. No Representations or warranties are expressed or implied as to the property, its condition, usage type, or boundaries. This offering is subject to errors, omissions, changes including price or withdrawal without notice.

Jenna Anderson
jennaanderson@crosbylandco.com

The information contained herein was obtained from sources deemed to be reliable. MapRight Services makes no warranties or guarantees as to the completeness or accuracy thereof.